

**RECLAMATION DISTRICT NO. 1601  
TWITCHELL ISLAND  
BOARD OF TRUSTEES MEETING  
TUESDAY, MAY 19, 2026  
9:00 AM  
ENGINEER'S REPORT**

**I. PROJECT FUNDING AGREEMENT TW – 24 - 1.0 - SP PHASE II OF DISTRICT MULTI-BENEFIT PROJECT**

- A. Construction of Phase 1 began on May 4, 2026, and is projected to be completed in September 2026.
- B. KSN is seeking approval of the PG&E easement deed from DWR Real Estate Division for the power pole relocation.

*EXHIBIT A: Field Photos from KSN Inc Daily Field Reports.*

**II. PROJECT FUNDING AGREEMENT TW – 21 - 1.2 TIMES/TWERP PROJECT**

- A. The 3-year maintenance period for irrigation and planting is underway and will end on January 31, 2029.
- B. RD 1601 received the additional \$1,000,000 in advance funds from DWR in late April. T&R Restore has submitted invoices for work performed since January 31, 2026.

**III. DISTRICT PUMP STATION SOLAR ARRAY**

- A. Construction Progress
  - a) Transformer & Switchgear pad has been installed and tested.
  - b) Conduit trenching and installation has been completed and inspected and approved by County and PGE.
  - c) Trenches have been backfilled and equipment slabs have been erected, inspected, and installed.
  - d) Bollards installed.
  - e) Upcoming work:
    - 1. PGE inspection for primary supply conduit.
    - 2. Switchgear & Disconnect installation.
    - 3. Conductor installation.

B. Work Change Directives / Change Orders

- a) WCD-008 PGE Transformer & Switchgear pad grade raising – Complete
- b) WCD-009: PGE approved design scope refinements
  - 1. WCD package has been issued and work is in progress.
- c) Potential Change – 012: Anticipated request for change to add funds to increase conductor sizing based on increased length, and industry pricing increases.

***EXHIBIT B: Field Photos from KSN Inc Daily Field Reports.***

**IV. 2026-2027 ASSESSMENT BY LANDOWNER SUMMARIES**

- A. Review the Districts Draft Assessment summaries calculated for 100%, 90%, and 80%, of the **\$700,000** approved assessment.

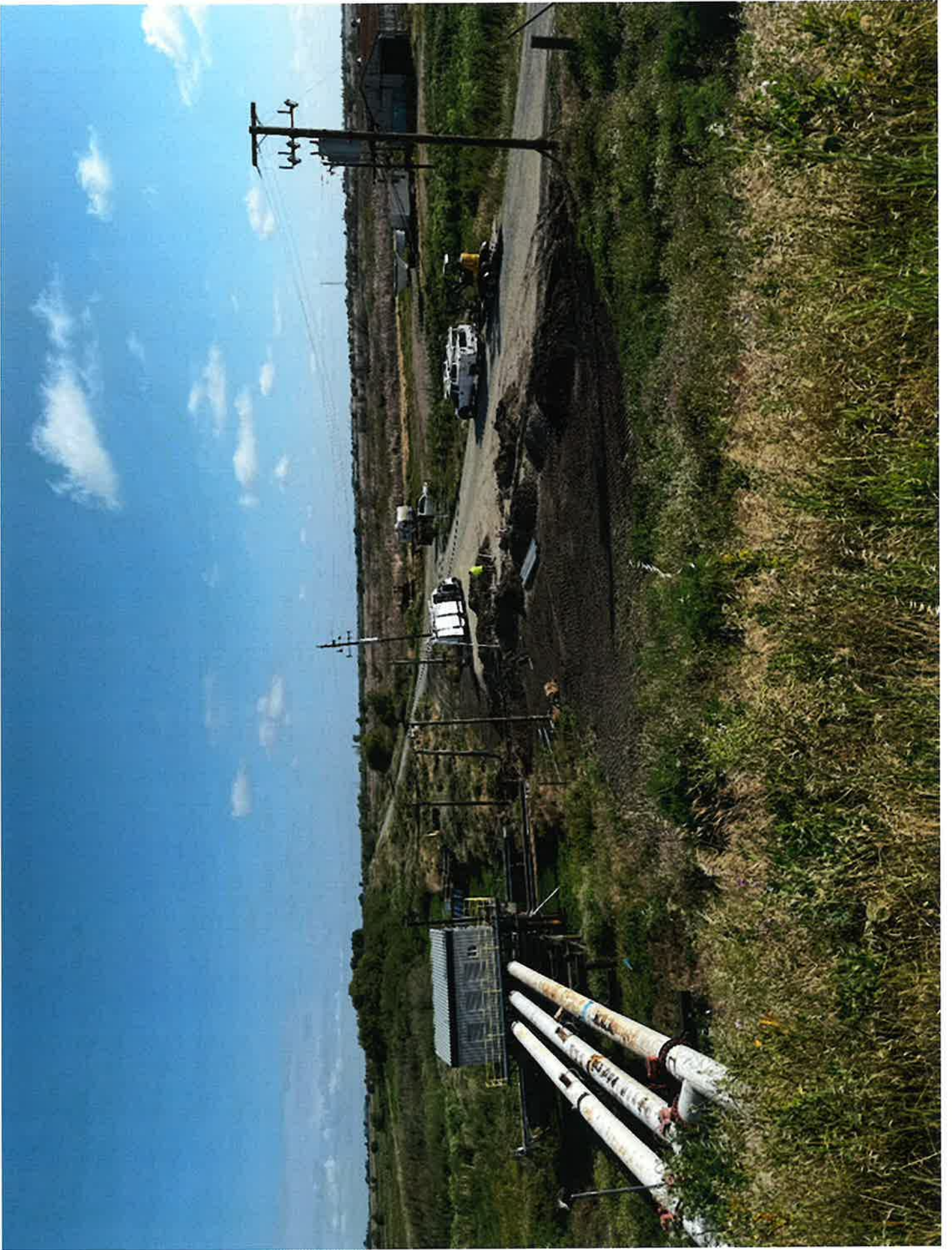
***EXHIBIT C: Assessment summaries 100%.***

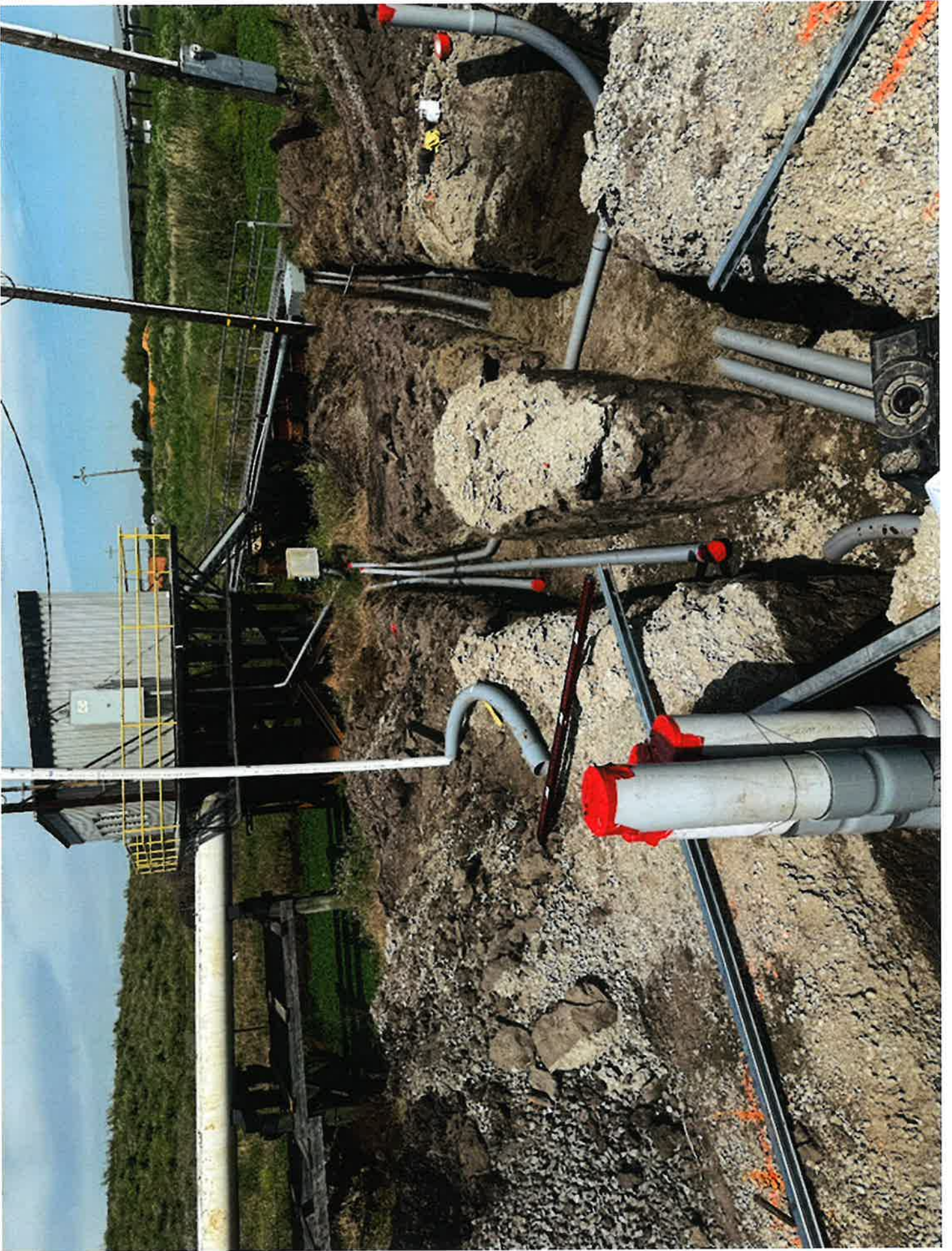
***EXHIBIT D: Assessment summaries 90%.***

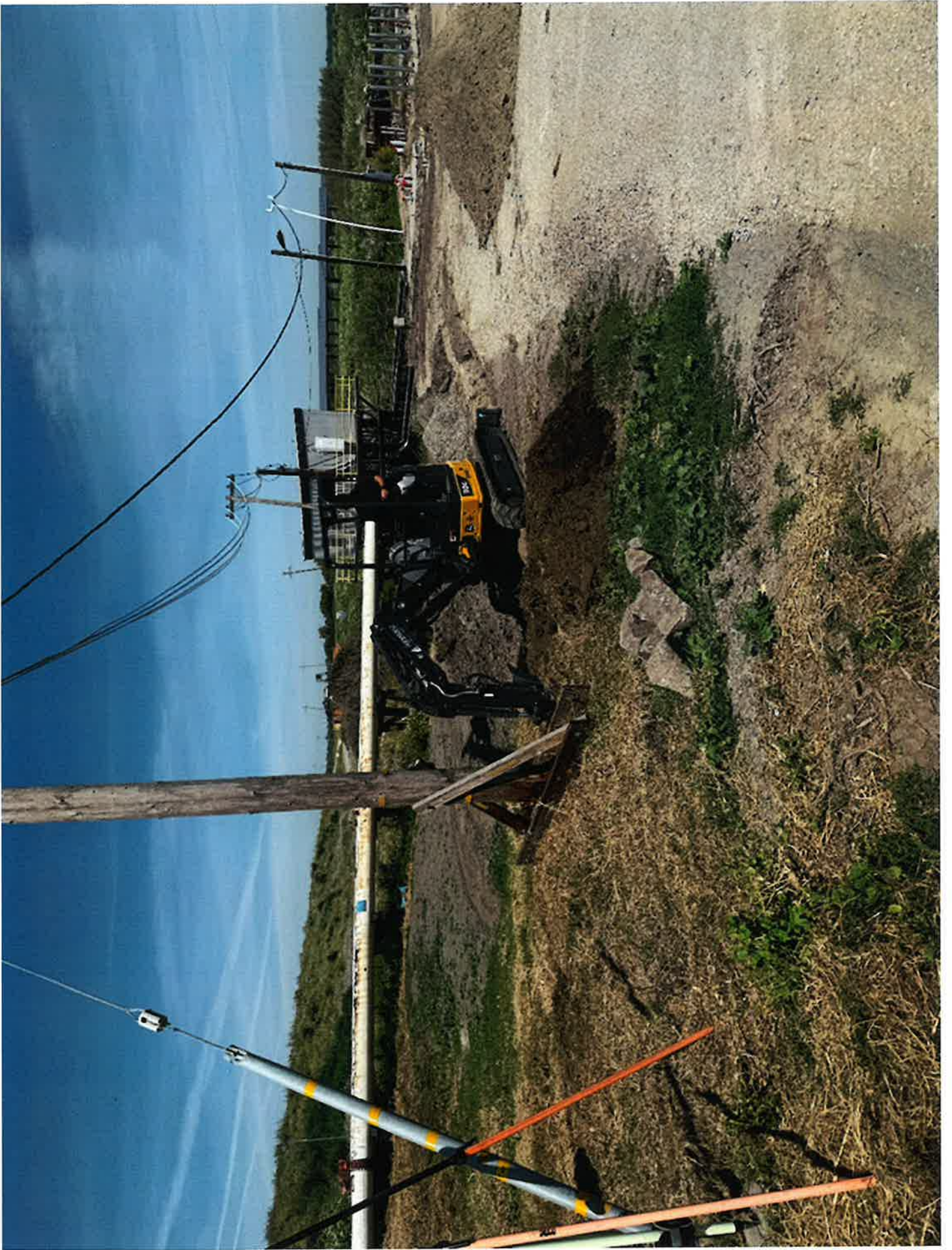
***EXHIBIT E: Assessment summaries 80%.***

# **EXHIBIT A**

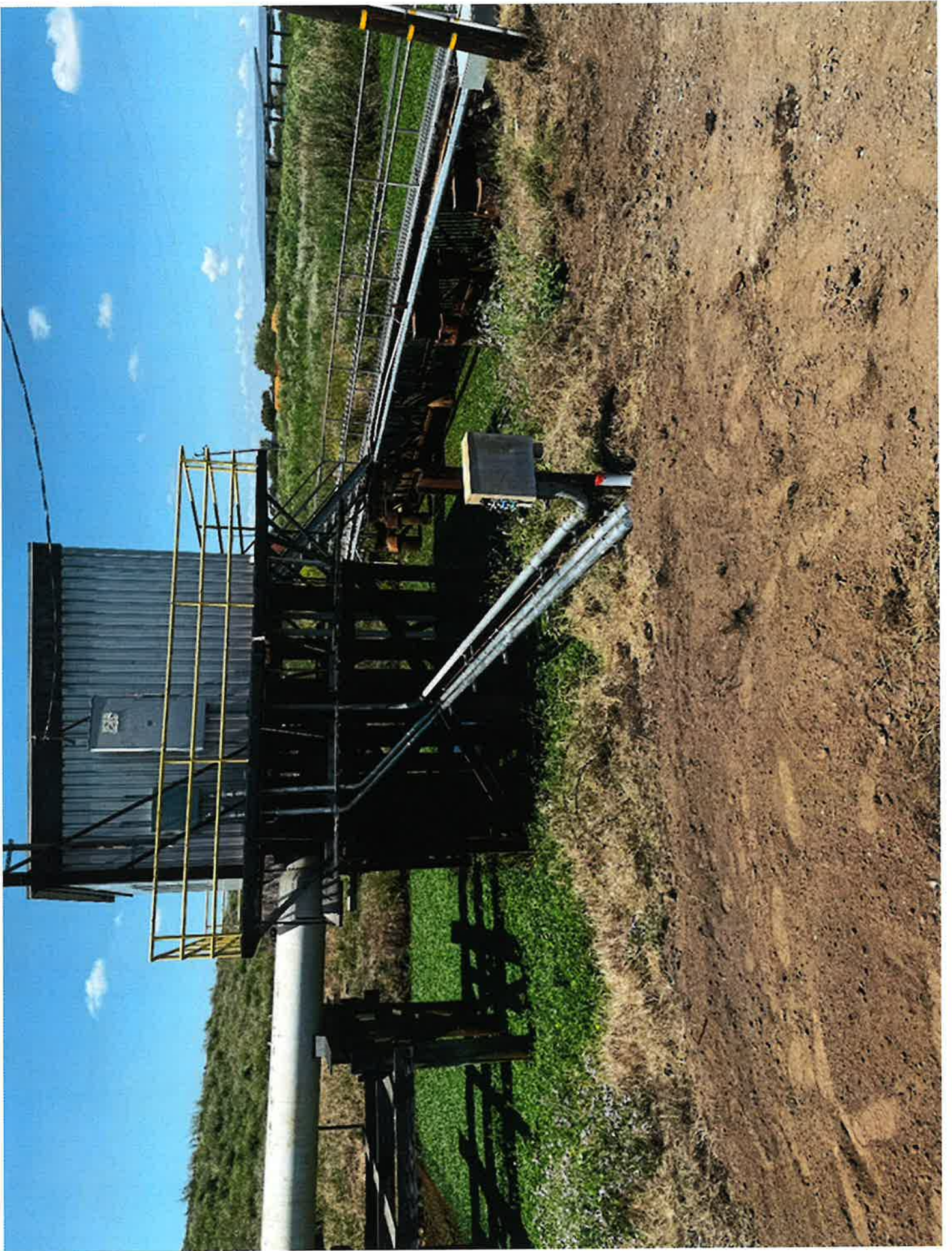




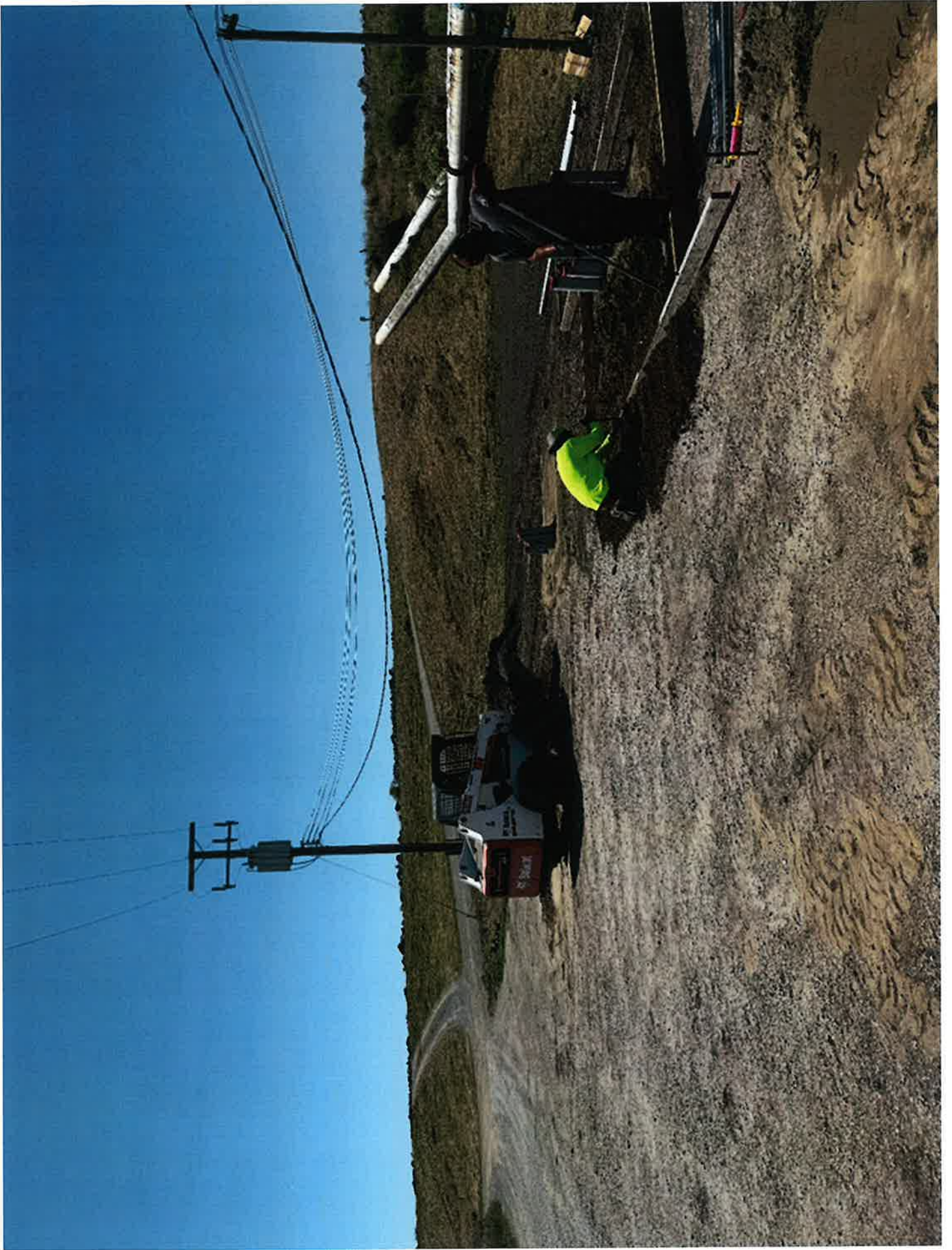


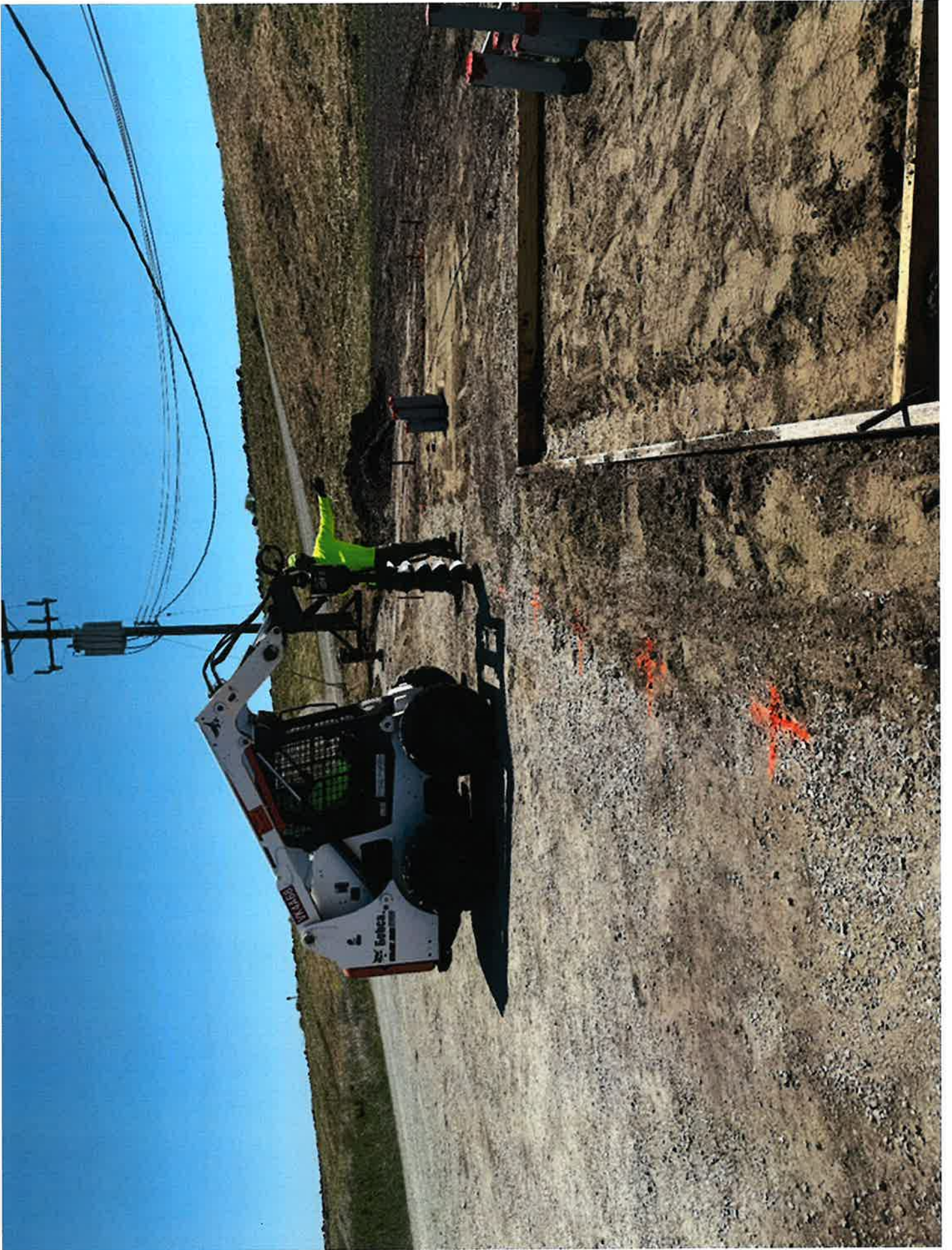








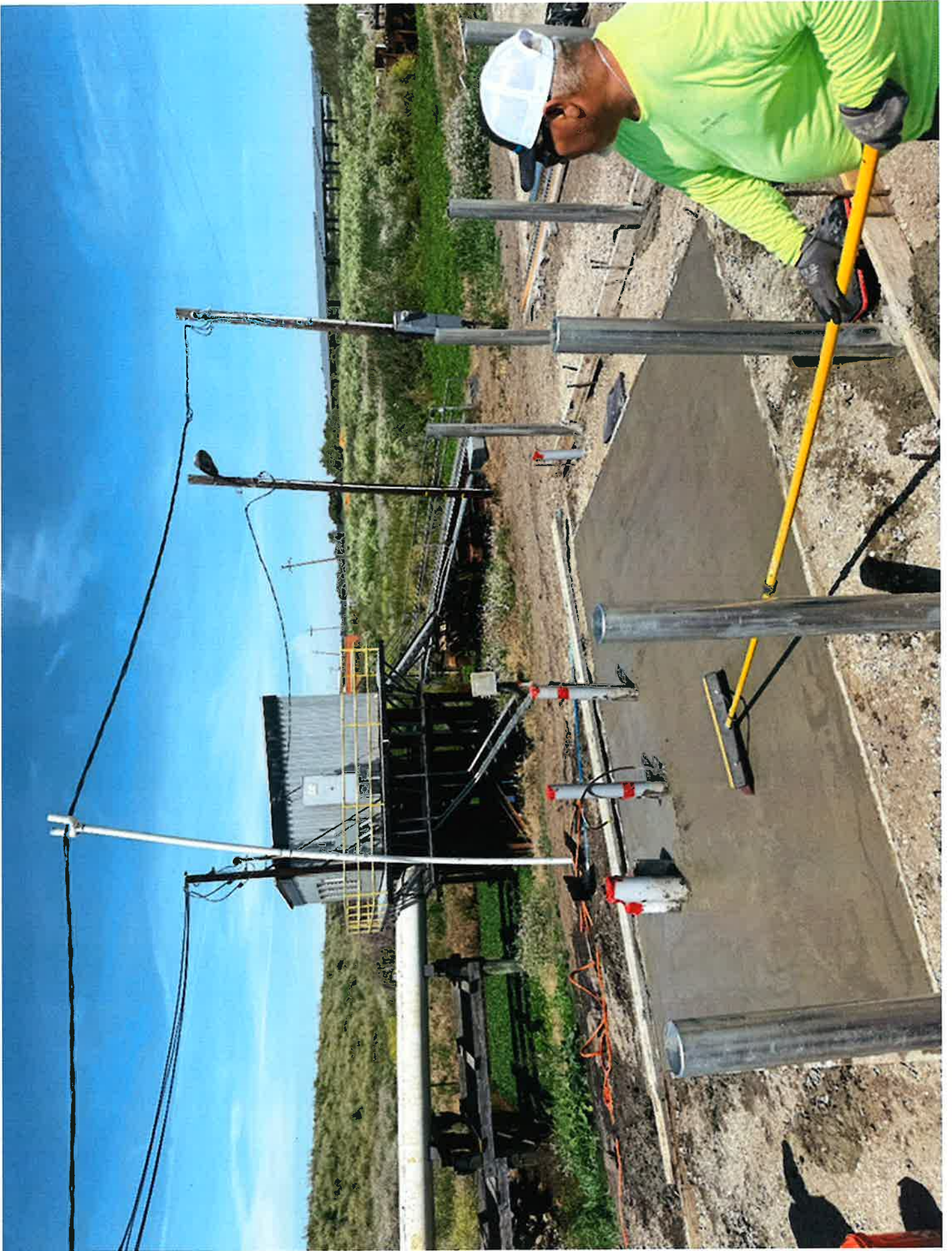


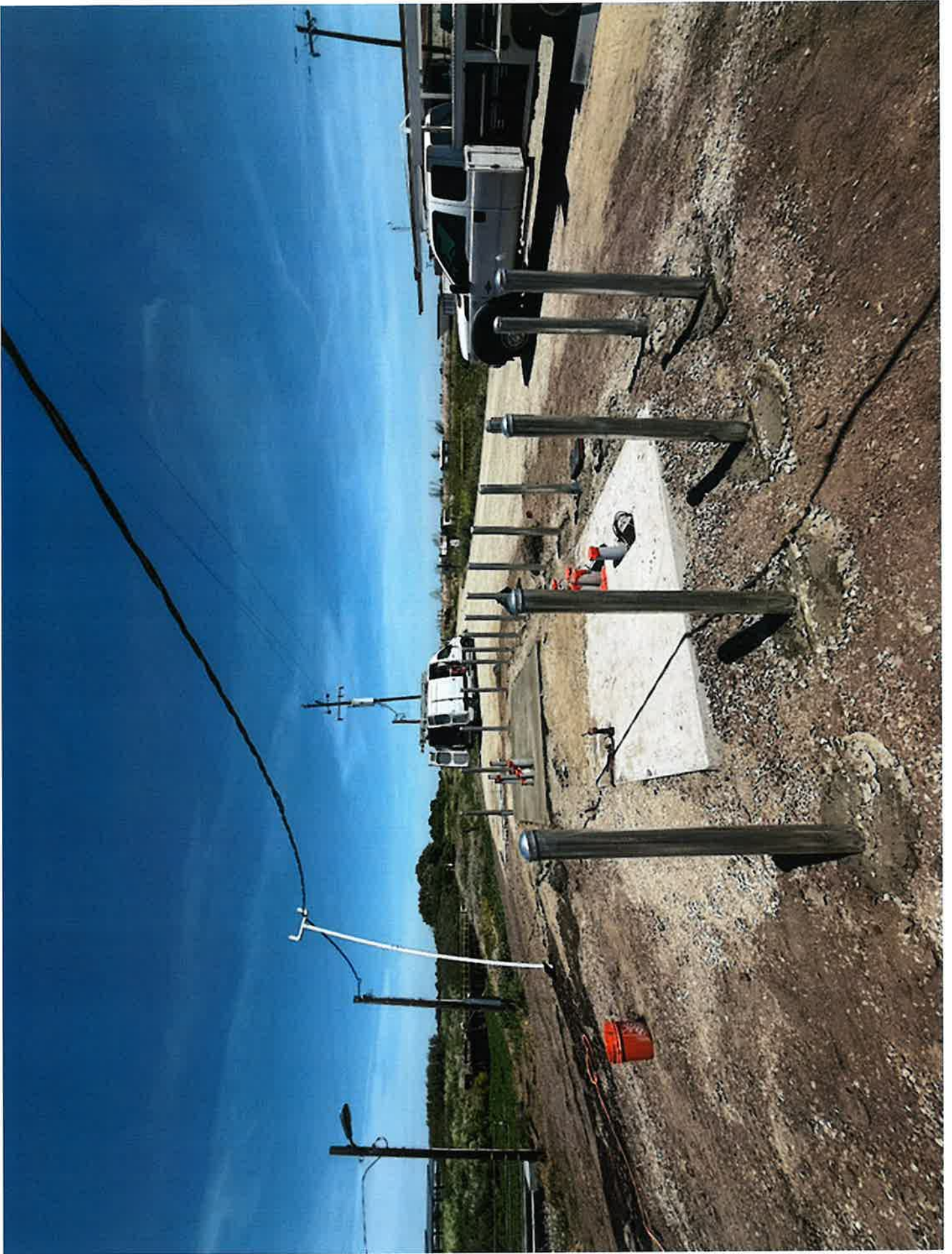


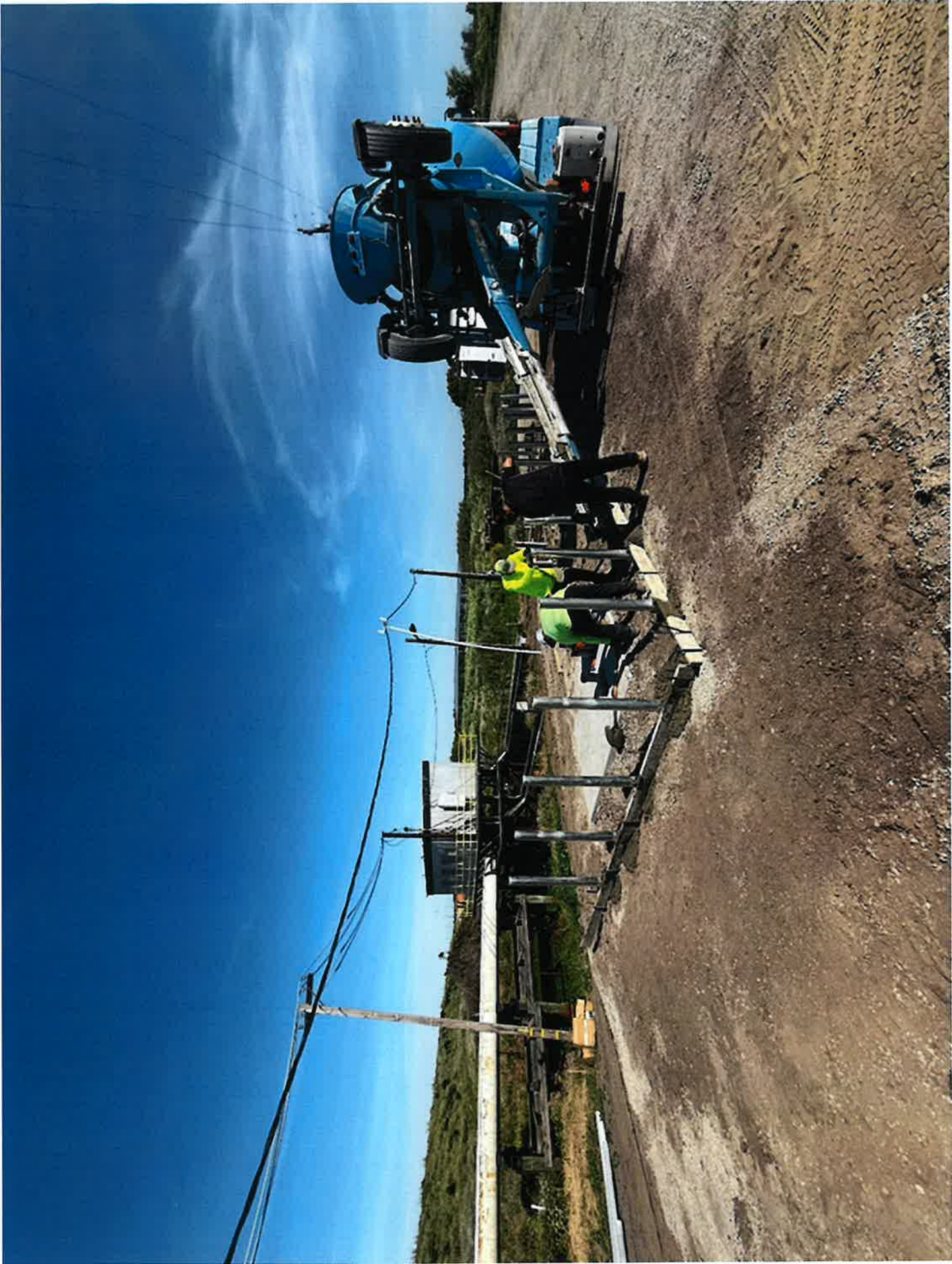








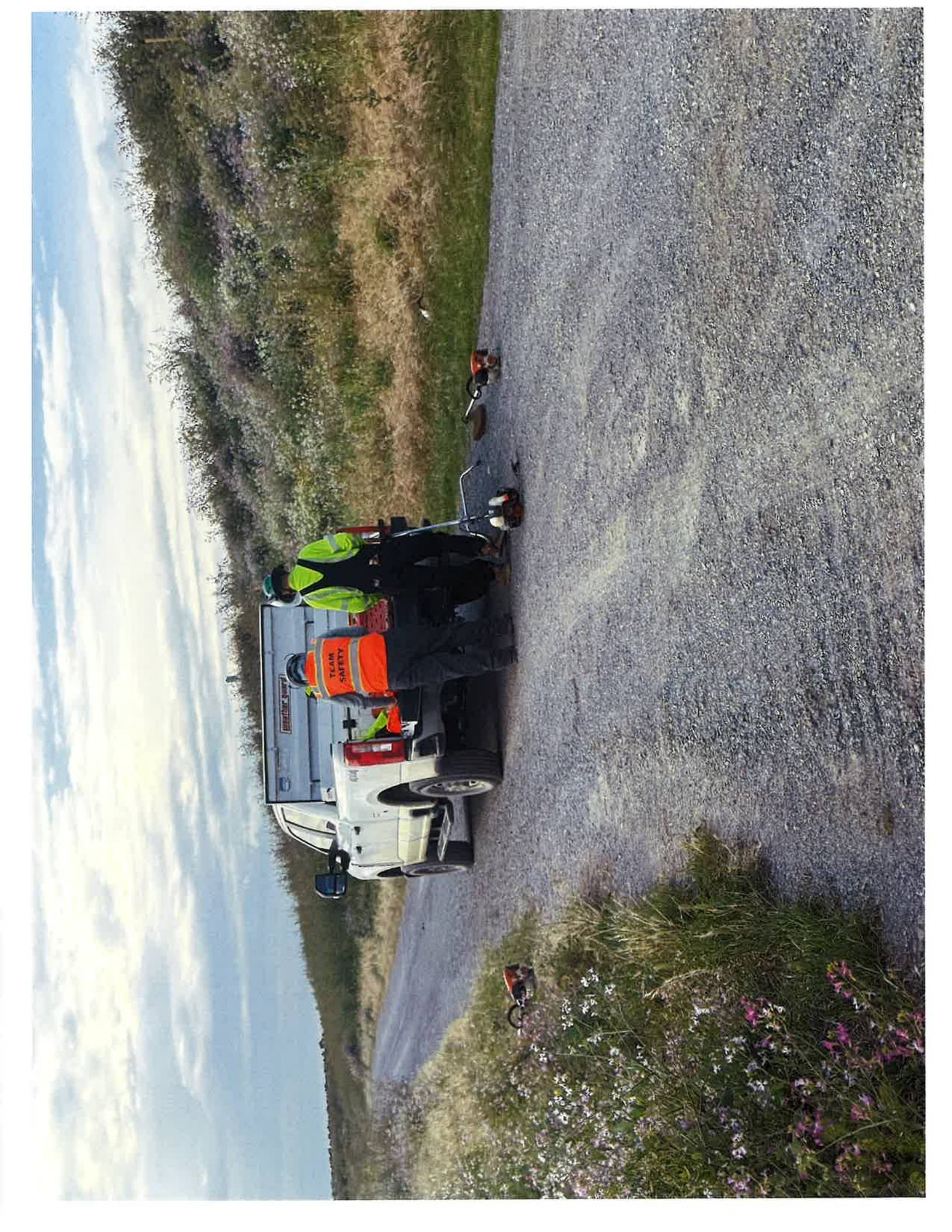


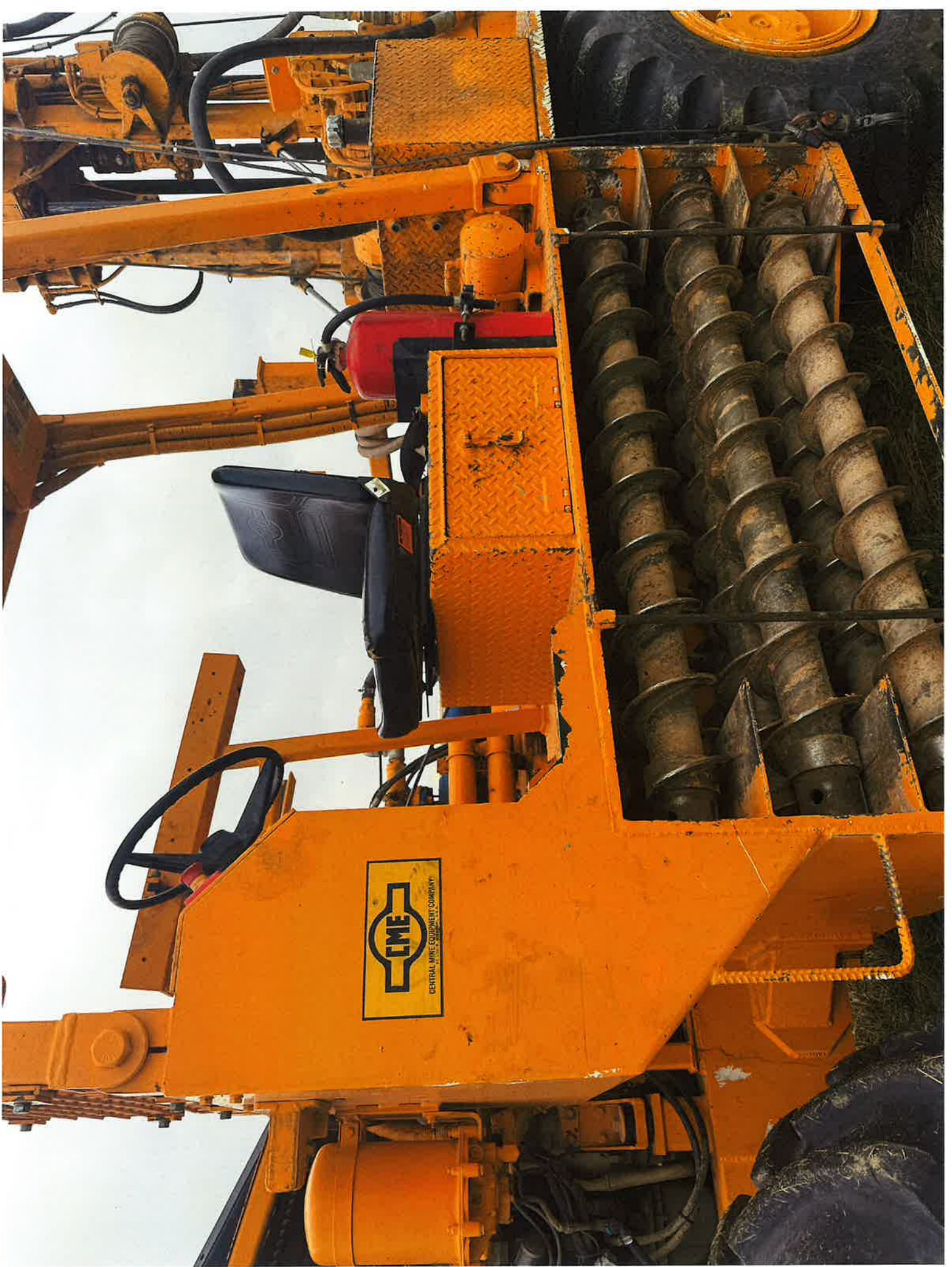


# **EXHIBIT B**



















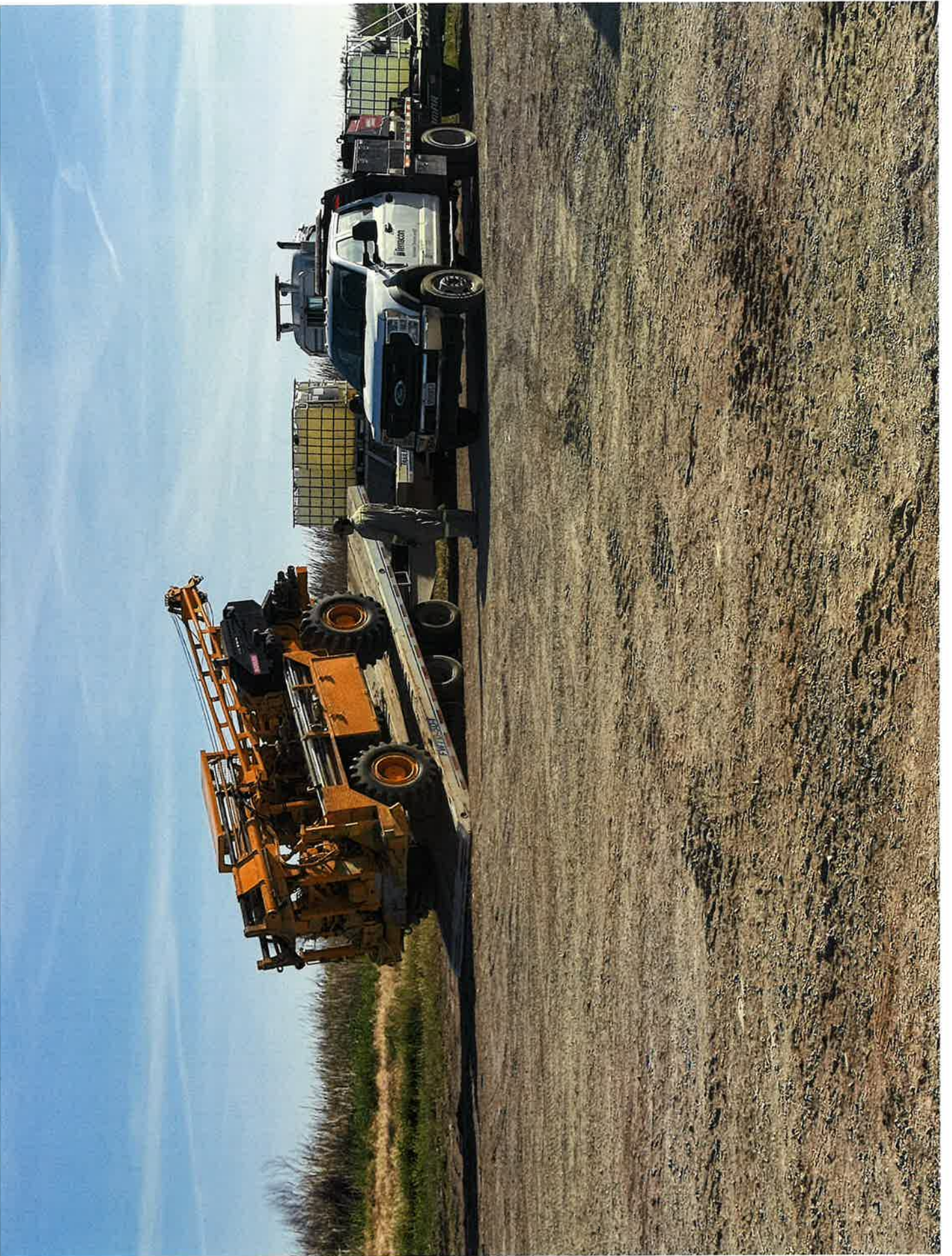
























CRS91984

HYDRA-FLUID

CAT

1-800-RENT-CAT

305

KH5D99

CR









   
**417-160F**  
45° ELBOW SOCKET SCH 40 FB  
DN 16"  
100% PVC  
100% Virgin PVC  
1.417-160 000155  
MADE IN U.S.A.  
WARNING: Cancer - [www.PCMwarning.ca.gov](http://www.PCMwarning.ca.gov)

   
**417-160F**  
45° ELBOW SOCKET SCH 40 FB  
DN 16"  
100% PVC  
100% Virgin PVC  
1.417-160 000155  
MADE IN U.S.A.  
WARNING: Cancer - [www.PCMwarning.ca.gov](http://www.PCMwarning.ca.gov)

AN08CT



# Exhibit C

---

**Reclamation District No. 1601**

**15-May-26**

**Assessment by Landowner - Fiscal Year 2026-2027**

**"AS IF" \$700,000 (100% of MAX ASSESSMENT)**

DEPLETION VALUE CALCULATIONS

			2026-2027	2025-2026
A - 2025 RV Total Prod	(on line opi.consrv.ca.gov)	(MCF)	1,497,193	1,871,496
B - 2025 Twitchell Prod	(add all 1601 prod wells)	(MCF)	393,362	383,095
C - Net Present Value	(2024 base yr value NPV)		\$26,872,322	\$26,872,322
D - Total Reserves		(MCF)	13,950,000,000	13,950,000,000
E - Base Year Value per MCF	(C/D)	(\$/MCF)	\$0.0019	\$0.0019
F - 2025 Unit Depletion Value	(E x A)		\$2,845	\$3,556

CALCULATIONS (BASED ON DOG #S)

			2026-2027	2025-2026
G - 2025 Base Year Value of the Unit - C			\$26,872,322	\$26,872,322
H - less: 2024 Unit Depletion Value - F			\$2,845	\$3,556
I - 2026 Base Year Value of the Unit - C-F			\$26,869,477	\$26,868,766
J - 2025 RD 1601 Pro Rata Share of Unit 383,095/1,871,496 - B/A			26.273299%	20.469988%
K - 2026 RD 1601 Value - I*J			\$7,059,498	\$5,500,033
L - Benefit Factor - Given in Minutes			4.00%	4.00%
M - 2026 RD 1601 Taxable Unit Value (Mineral Rights) - K*L			\$282,380	\$220,001

ASSESSMENT FACTOR (Max Assessment Factor 47.6382) = X/W = 39.00283

Landowner	Acreage	Per Acre	Total Valuation	2026-27	
RD 1601	422.509	200	84,502	\$32,958.09	4.7%
Karlie & Noeme Silva	0.951	400	380	\$148.37	0.0%
Marjorie H. Sgarrella	1.480	400	592	\$230.90	0.0%
County of Sacramento	0.010	0	0	\$0.00	0.0%
RD 1601	121.400	200	24,280	\$9,469.89	1.4%
State of California	2244.497	200	448,899	\$175,083.47	25.0%
State of California	764.900	1200	917,880	\$357,999.16	51.1%
Fagundes Dairy	47.750	200	9,550	\$3,724.77	0.5%
Stkn Marina Properties LLC	20.000	1200	24,000	\$9,360.68	1.3%
Exxon Corporation ***	0.870	200	174	\$67.86	0.0%
Carter	10.520	200	2,104	\$820.62	0.1%
					0.0%
	3634.887				0.0%
California Resources Production (W)			282,380	\$110,136.19	15.7%
<b>Total Assessment (X)</b>			<b>1,794,742</b>	<b>\$700,000.00</b>	<b>1</b>

\*\*\* Bill Exxon Corp to State of CA \$700,000.00

**Reclamation District No. 1601, Twitchell Island  
Revised Acreage Operation and Maintenance Assessment Roll  
5/15/2026**

A		B		C		D		E			F			G			H		
Tract No.	Description Sacramento County Assessor Parcel No.	Acres	Habitat Restoration Acres	Revised Acres	Owner	Assessment Valuation per Acre	New Total Assessment Valuation (B x D)	Proposed New Rate per \$100 of Assessed Valuation	Proposed Total Assessment (E/100) x F	Prior Total Valuation (B x D)	Prior Rate per \$100 of Assessed Valuation	Prior Total Assessment (H/100) x I	PRIOR ASSESSMENT (2025-26)						
													\$700,000 (100% of MAX ASSESSMENT)						
1	157-0130-026	422.509		422.509	RD No 1601	200	84,502	39.00283	\$32,958.09	84,502	40.40724	\$34,144.85							
2	157-0130-027	117.000		117.000	RD No 1601	200	23,400	39.00283	\$9,126.67	23,400	40.40724	\$9,455.30							
3	157-0130-011	0.951		0.951	Karlie & Noeme Silva	400	380	39.00283	\$148.37	380	40.40724	\$153.71							
4	157-0130-015	0.566		0.566	State of California	200	113	39.00283	\$44.15	113	40.40724	\$45.74							
5	157-0130-019	0.410		0.410	Marjorie H. Sgarrella	400	164	39.00283	\$63.96	164	40.40724	\$66.27							
6	157-0130-016	0.741		0.741	State of California	200	148	39.00283	\$57.80	148	40.40724	\$59.88							
7	157-0130-018	1.070		1.070	Marjorie H. Sgarrella	400	428	39.00283	\$166.94	428	40.40724	\$172.94							
8	157-0130-014	0.010		0.010	County of Sacramento	0	0	39.00283	\$0.00	0	40.40724	\$0.00							
9	157-0130-017	102.450		102.450	State of California	200	20,490	39.00283	\$7,991.68	20,490	40.40724	\$8,279.44							
10	157-0130-004	200.550		200.550	State of California	200	40,110	39.00283	\$15,644.04	40,110	40.40724	\$16,207.34							
11	157-0130-024	302.960		302.960	State of California	200	60,592	39.00283	\$23,632.59	60,592	40.40724	\$24,483.55							
12	157-0130-020	47.750		47.750	Fagundes Dairy	200	9,550	39.00283	\$3,724.77	9,550	40.40724	\$3,858.89							
13	157-0130-022	40.000		40.000	State of California	200	8,000	39.00283	\$3,120.23	8,000	40.40724	\$3,232.58							
14	157-0130-008	300.850		300.850	State of California	200	60,170	39.00283	\$23,468.00	60,170	40.40724	\$24,313.04							
15	157-0130-006	357.980		357.980	State of California	200	71,596	39.00283	\$27,924.47	71,596	40.40724	\$28,929.97							
16	157-0130-007	102.000		102.000	State of California	200	20,400	39.00283	\$7,956.58	20,400	40.40724	\$8,243.08							
17	157-0140-004	1.000		1.000	State of California	200	200	39.00283	\$78.01	200	40.40724	\$80.81							
18a	157-0140-020	578.470	209.400	369.070	State of California	200	73,814	39.00283	\$28,789.54	73,814	40.40724	\$29,826.21							
18b	157-0140-020			209.400	State of California	1200	251,280	39.00283	\$98,006.30	251,280	40.40724	\$101,535.39							
19a	157-0140-011	181.500	140.800	40.700	State of California	200	8,140	39.00283	\$3,174.83	8,140	40.40724	\$3,289.15							
19b	157-0140-011			140.800	State of California	1200	168,960	39.00283	\$65,899.18	168,960	40.40724	\$68,272.07							
20a	157-0140-009	186.000	121.100	64.900	State of California	200	12,980	39.00283	\$5,062.57	12,980	40.40724	\$5,244.86							
20b	157-0140-009			121.100	State of California	1200	145,320	39.00283	\$56,678.91	145,320	40.40724	\$58,719.80							
21a	157-0140-010	181.500	111.300	70.200	State of California	200	14,040	39.00283	\$5,476.00	14,040	40.40724	\$5,673.18							
21b	157-0140-010			111.300	State of California	1200	133,560	39.00283	\$52,092.18	133,560	40.40724	\$53,967.91							
22	157-0140-015	20.000		20.000	Sikn Marina Properties LLC	1200	24,000	39.00283	\$9,360.68	24,000	40.40724	\$9,697.74							
23	157-0130-003	0.870		0.870	State of California (1/2)	200	174	39.00283	\$67.86	174	40.40724	\$70.31							
24	157-0130-023	10.520		10.520	Ricky & Linda Carter	200	2,104	39.00283	\$820.62	2,104	40.40724	\$850.17							
25	** 157-0130-023	0.360		0.360	RD No 1601	200	72	39.00283	\$28.08	72	40.40724	\$29.09							
26	157-0130-025	4.040		4.040	RD No 1601	200	808	39.00283	\$315.14	808	40.40724	\$326.49							
27a	157-0140-021	471.960	182.300	289.660	State of California	200	57,932	39.00283	\$22,595.12	57,932	40.40724	\$23,408.72							
27b	157-0140-021			182.300	State of California	1200	218,760	39.00283	\$85,322.59	218,760	40.40724	\$88,394.88							
		3,634.887	764.900	3,634.887			1,512,362	39.00283	\$110,136.19	1,512,362	40.40724	\$88,896.33							
					California Resources Production LESS RD1601		282,380		(\$42,427.98)	220,001		(\$43,955.73)							
							1,794,742		\$657,572.02	1,732,363		\$656,044.27							

\*\* .36 purchased from Carter for exclusive levee easement  
\*\*\* Exxon Corp billed to State of CA

# Exhibit D

---

**Reclamation District No. 1601**

**15-May-26**

**Assessment by Landowner - Fiscal Year 2026-2027**

**"AS IF" \$630,000 ( 90% of MAX ASSESSMENT)**

DEPLETION VALUE CALCULATIONS

			2026-2027	2025-2026
A - 2025 RV Total Prod	(on line opi.consrv.ca.gov)	(MCF)	1,497,193	1,871,496
B - 2025 Twitchell Prod	(add all 1601 prod wells)	(MCF)	393,362	383,095
C - Net Present Value	(2024 base yr value NPV)		\$26,872,322	\$26,872,322
D - Total Reserves		(MCF)	13,950,000,000	13,950,000,000
E - Base Year Value per MCF	(C/D)	(\$/MCF)	\$0.0019	\$0.0019
F - 2025 Unit Depletion Value	(E x A)		\$2,845	\$3,556

CALCULATIONS (BASED ON DOG #S)

			2026-2027	2025-2026
G - 2025 Base Year Value of the Unit - C			\$26,872,322	\$26,872,322
H - less: 2024 Unit Depletion Value - F			\$2,845	\$3,556
I - 2026 Base Year Value of the Unit - C-F			\$26,869,477	\$26,868,766
J - 2025 RD 1601 Pro Rata Share of Unit	383,095/1,871,496 - B/A		26.273299%	20.469988%
K - 2026 RD 1601 Value - I*J			\$7,059,498	\$5,500,033
L - Benefit Factor - Given in Minutes			4.00%	4.00%
M - 2026 RD 1601 Taxable Unit Value (Mineral Rights) - K*L			\$282,380	\$220,001

ASSESSMENT FACTOR (Max Assessment Factor 47.6382) = X/W = 35.10255

Landowner	Acreage	Per Acre	Total Valuation	2026-27	
RD 1601	422.509	200	84,502	\$29,662.29	4.7%
Karlie & Noeme Silva	0.951	400	380	\$133.53	0.0%
Marjorie H. Sgarrella	1.480	400	592	\$207.81	0.0%
County of Sacramento	0.010	0	0	\$0.00	0.0%
RD 1601	121.400	200	24,280	\$8,522.90	1.4%
State of California	2244.497	200	448,899	\$157,575.14	25.0%
State of California	764.900	1200	917,880	\$322,199.21	51.1%
Fagundes Dairy	47.750	200	9,550	\$3,352.29	0.5%
Stkn Marina Properties LLC	20.000	1200	24,000	\$8,424.61	1.3%
Exxon Corporation ***	0.870	200	174	\$61.08	0.0%
Carter	10.520	200	2,104	\$738.56	0.1%
					0.0%
	3634.887				0.0%
California Resources Production (W)			282,380	\$99,122.58	15.7%
Total Assessment (X)			1,794,742	\$630,000.00	1

\*\*\* Bill Exxon Corp to State of CA \$630,000.00

**Reclamation District No. 1601, Twitchell Island**  
**Revised Acreage Operation and Maintenance Assessment Roll**  
 5/15/2026

(Max Assessment Factor 47.6382)										Proposed New Assessment Factor (MAX)	
										Prior Assessment Factor (2025-26)	
										\$630,000 (90% of MAX ASSESSMENT)	
PROPOSED NEW ASSESSMENT (2026-27)										PRIOR ASSESSMENT (2025-26)	
A	B	C	D	E	F	G	H	I	J		
Tract No.	Description Sacramento County Assessor Parcel No.	Habitat Restoration Acres	Revised Acres	Owner	Assessment Valuation per Acre	New Total Assessment Valuation (B x D)	Proposed New Rate per \$100 of Assessed Valuation	Proposed Total Assessment (E/100) x F	Prior Total Valuation (B x D)	Prior Rate per \$100 of Assessed Valuation	Prior Total Assessment (H/100) x I
1	157-0130-026	422.509	422.509	RD No 1601	200	84,502	35.10255	\$29,662.29	84,502	36.36652	\$30,730.36
2	157-0130-027	117.000	117.000	RD No 1601	200	23,400	35.10255	\$8,214.00	23,400	36.36652	\$8,509.77
3	157-0130-011	0.951	0.951	Karlie & Neeme Silva	400	380	35.10255	\$133.53	380	36.36652	\$138.34
4	157-0130-015	0.566	0.566	State of California	200	113	35.10255	\$39.74	113	36.36652	\$41.17
5	157-0130-019	0.410	0.410	Marjorie H. Sparrrella	400	164	35.10255	\$57.57	164	36.36652	\$59.64
6	157-0130-016	0.741	0.741	State of California	200	148	35.10255	\$52.02	148	36.36652	\$53.90
7	157-0130-018	1.070	1.070	Marjorie H. Sparrrella	400	428	35.10255	\$150.24	428	36.36652	\$155.65
8	157-0130-014	0.010	0.010	County of Sacramento	0	0	35.10255	\$0.00	0	36.36652	\$0.00
9	157-0130-017	102.450	102.450	State of California	200	20,490	35.10255	\$7,192.51	20,490	36.36652	\$7,451.50
10	157-0130-004	200.550	200.550	State of California	200	40,110	35.10255	\$14,079.63	40,110	36.36652	\$14,586.61
11	157-0130-024	302.960	302.960	State of California	200	60,592	35.10255	\$21,269.34	60,592	36.36652	\$22,035.20
12	157-0130-020	47.750	47.750	Fagundes Dairy	200	9,550	35.10255	\$3,352.29	9,550	36.36652	\$3,473.00
13	157-0130-022	40.000	40.000	State of California	200	8,000	35.10255	\$2,808.20	8,000	36.36652	\$2,909.32
14	157-0130-008	300.850	300.850	State of California	200	60,170	35.10255	\$21,121.20	60,170	36.36652	\$21,881.74
15	157-0130-006	357.980	357.980	State of California	200	71,596	35.10255	\$25,132.02	71,596	36.36652	\$26,036.97
16	157-0130-007	102.000	102.000	State of California	200	20,400	35.10255	\$7,160.92	20,400	36.36652	\$7,418.77
17	157-0140-004	1.000	1.000	State of California	200	200	35.10255	\$70.21	200	36.36652	\$72.73
18a	157-0140-020	578.470	369.070	State of California	200	73,814	35.10255	\$25,910.60	73,814	36.36652	\$26,843.59
18b	157-0140-020	181.500	209.400	State of California	1200	251,280	35.10255	\$88,205.60	251,280	36.36652	\$91,381.81
19a	157-0140-011	181.500	40.700	State of California	200	8,140	35.10255	\$2,857.35	8,140	36.36652	\$2,960.23
19b	157-0140-011	181.500	140.800	State of California	200	168,960	35.10255	\$59,309.27	168,960	36.36652	\$61,444.87
20a	157-0140-009	186.000	64.900	State of California	200	12,980	35.10255	\$4,556.31	12,980	36.36652	\$4,720.37
20b	157-0140-009	186.000	121.100	State of California	200	145,320	35.10255	\$51,011.03	145,320	36.36652	\$52,847.83
21a	157-0140-010	181.500	70.200	State of California	200	14,040	35.10255	\$4,928.40	14,040	36.36652	\$5,105.86
21b	157-0140-010	181.500	111.300	State of California	200	133,560	35.10255	\$46,882.97	133,560	36.36652	\$48,571.12
22	157-0140-015	20.000	20.000	Stkn Marina Properties LLC	1200	24,000	35.10255	\$8,424.61	24,000	36.36652	\$8,727.96
23	157-0130-003	0.870	0.870	State of California (1/2)	200	174	35.10255	\$61.08	174	36.36652	\$63.28
24	157-0130-023	10.520	10.520	State of California (1/2)	200	174	35.10255	\$61.08	174	36.36652	\$63.28
25	**157-0130-023	0.360	0.360	Ricky & Linda Carter	200	2,104	35.10255	\$738.56	2,104	36.36652	\$765.15
26	157-0130-025	4.040	0.360	RD No 1601	200	72	35.10255	\$25.27	72	36.36652	\$26.18
27a	157-0140-021	471.960	289.660	State of California	200	808	35.10255	\$283.63	808	36.36652	\$293.84
27b	157-0140-021	471.960	182.300	State of California	200	57,932	35.10255	\$20,335.61	57,932	36.36652	\$21,067.85
			182.300	State of California	1200	218,760	35.10255	\$76,790.34	218,760	36.36652	\$79,555.40
			3,634.887								
			3,634.887			1,512,362			1,512,362		
				California Resources Production LESS RD1601		282,380	35.10255	\$99,122.58 (\$38,185.19)	220,001	36.36652	\$80,006.71 (\$39,560.15)
						1,794,742		\$591,814.81	1,732,363		\$590,439.85

\*\* .36 purchased from Carter for exclusive levee easement  
 \*\*\* Exxon Corp billed to State of CA

# Exhibit E

---

**Reclamation District No. 1601**

**15-May-26**

**Assessment by Landowner - Fiscal Year 2026-2027**

**\$560,000 ( 80% of MAX ASSESSMENT)**

DEPLETION VALUE CALCULATIONS

			2026-2027	2025-2026
A - 2025 RV Total Prod	(on line opi.consrv.ca.gov)	(MCF)	1,497,193	1,871,496
B - 2025 Twitchell Prod	(add all 1601 prod wells)	(MCF)	393,362	383,095
C - Net Present Value	(2024 base yr value NPV)		\$26,872,322	\$26,872,322
D - Total Reserves		(MCF)	13,950,000,000	13,950,000,000
E - Base Year Value per MCF	(C/D)	(\$/MCF)	\$0.0019	\$0.0019
F - 2025 Unit Depletion Value	(E x A)		\$2,845	\$3,556

CALCULATIONS (BASED ON DOG #S)

			2026-2027	2025-2026
G - 2025 Base Year Value of the Unit - C			\$26,872,322	\$26,872,322
H - less: 2024 Unit Depletion Value - F			\$2,845	\$3,556
I - 2026 Base Year Value of the Unit - C-F			\$26,869,477	\$26,868,766
J - 2025 RD 1601 Pro Rata Share of Unit 383,095/1,871,496 - B/A			26.273299%	20.469988%
K - 2026 RD 1601 Value - I*J			\$7,059,498	\$5,500,033
L - Benefit Factor - Given in Minutes			4.00%	4.00%
M - 2026 RD 1601 Taxable Unit Value (Mineral Rights) - K*L			\$282,380	\$220,001

ASSESSMENT FACTOR (Max Assessment Factor 47.6382) = X/W = 31.20226

Landowner	Acreage	Per Acre	Total Valuation	2026-27	
RD 1601	422.509	200	84,502	\$26,366.47	4.7%
Karlie & Noeme Silva	0.951	400	380	\$118.69	0.0%
Marjorie H. Sgarrella	1.480	400	592	\$184.72	0.0%
County of Sacramento	0.010	0	0	\$0.00	0.0%
RD 1601	121.400	200	24,280	\$7,575.91	1.4%
State of California	2244.497	200	448,899	\$140,066.76	25.0%
State of California	764.900	1200	917,880	\$286,399.36	51.1%
Fagundes Dairy	47.750	200	9,550	\$2,979.82	0.5%
Stkn Marina Properties LLC	20.000	1200	24,000	\$7,488.54	1.3%
Exxon Corporation ***	0.870	200	174	\$54.29	0.0%
Carter	10.520	200	2,104	\$656.50	0.1%
					0.0%
	3634.887				0.0%
California Resources Production (W)			282,380	\$88,108.94	15.7%
<b>Total Assessment (X)</b>			<b>1,794,742</b>	<b>\$560,000.00</b>	<b>1</b>

\*\*\* Bill Exxon Corp to State of CA \$560,000.00

